

High-quality printing made easier.

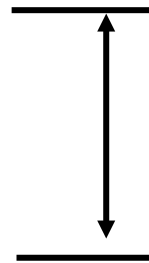
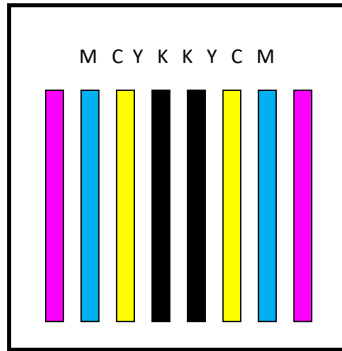
UJV200-160 *UJV200-130*

Roll-to-Roll LED-UV Curing Inkjet Printer



Overview | Ink Set

4Color/
4Color+SP



Single Head

1.33 inches

400 nozzles × 8
= 3,200 nozzles

Ink Type	Ink Sets		Ink Capacity
ELS-170 ELS-175*	① 4 C		1 L Bottle
	② 4 C+CL+W		1 L Bottle

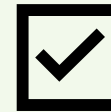
Ink Type	Ink Sets		Ink Capacity
LUS-210*	① 4 C		1 L Bottle
	② 4C+CL+W		1 L Bottle
	③ 4 C+W		1 L Bottle

*Available only in LATAM

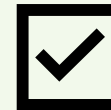
Safer UV ink

for human health and the environment

*Compared to conventional ink (LUS)



Inherits the reliable performance of existing ink
Reliable functionality
tailored to applications



Approximately 30% reduction in odor compared to existing ink (LUS)
Approximately 30% reduction in odor



Globally regulated Ingredients (SVHC/CMR) excluded

SVHC/CMR Free ink



Overview | Main Unit Mechanism



High quality printing made easier.

01. Standout Print Quality for
Signage

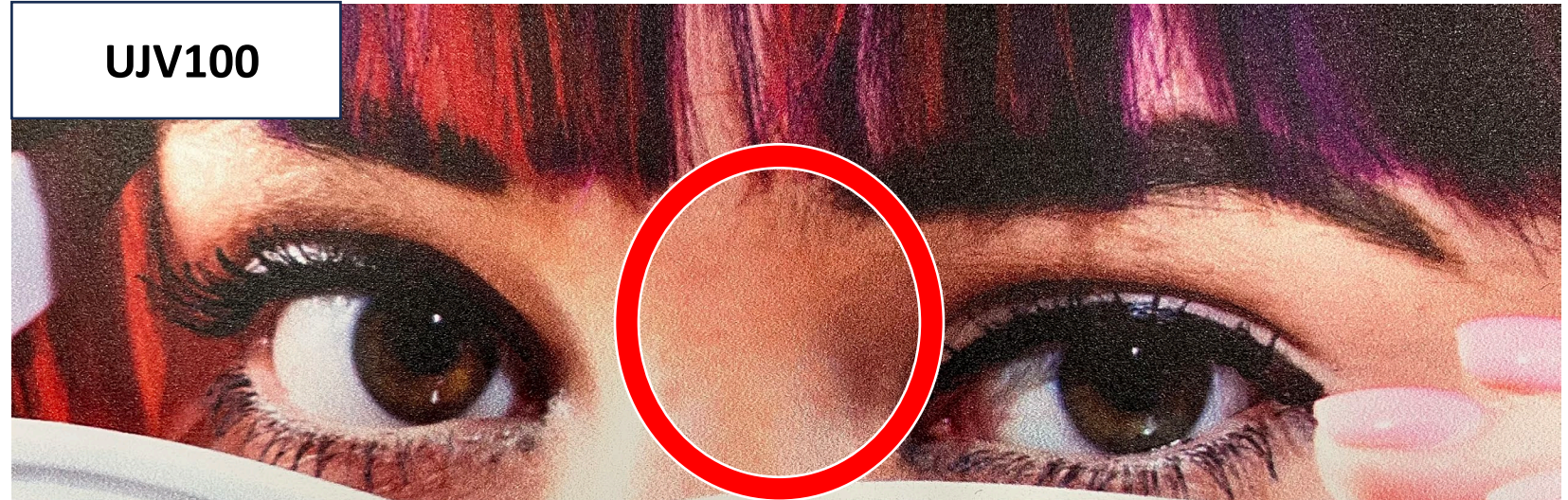
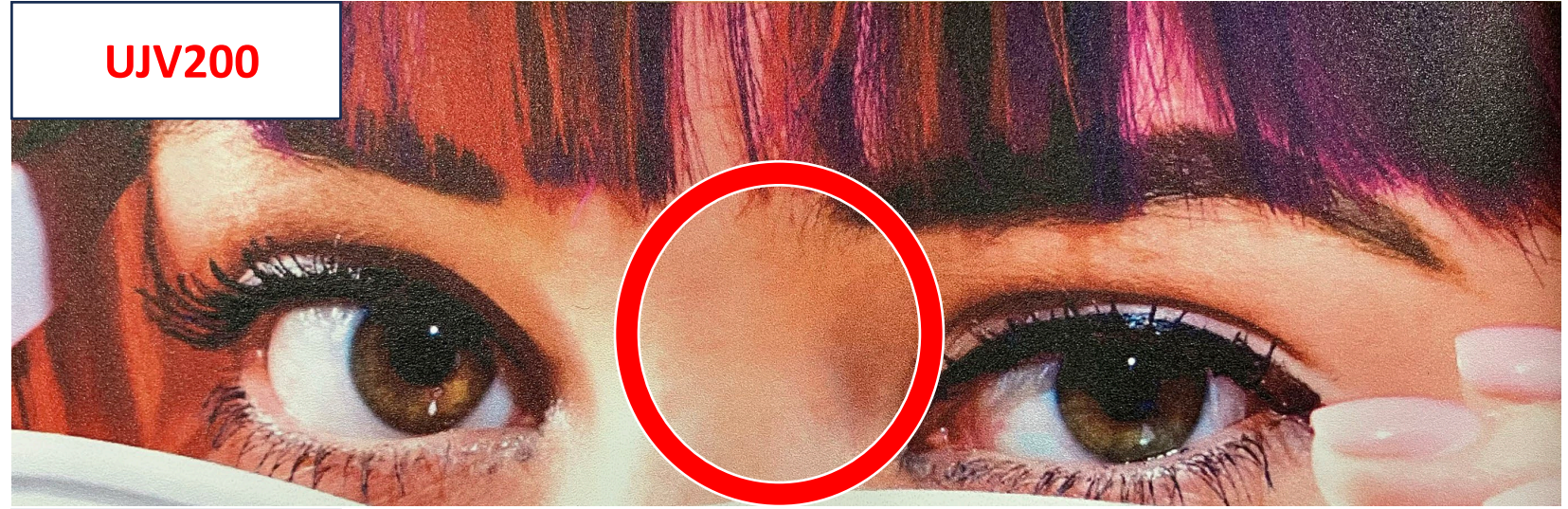
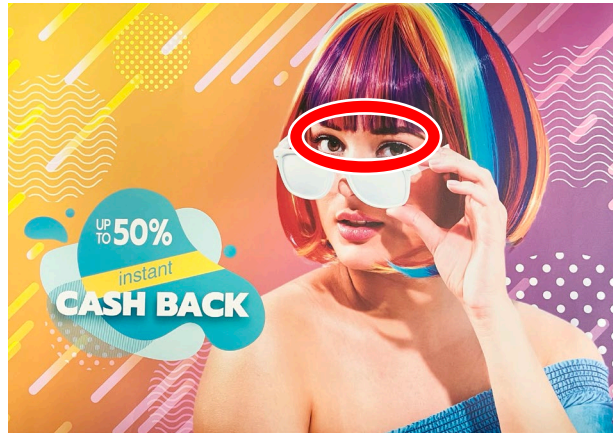
02. Optimal Quality for anyone.
Simple Operation.

03. High-Value Prints on **Any Media**

01. Standout Print Quality for Signage



Skin tones without graininess



UJV200-160 4C+SP 1200 x 600 dpi 8pass
Auto-adjust with DAS2

UJV100-160 4C+SP 720 x 900 dpi 12pass
Auto Adjustment with DAS

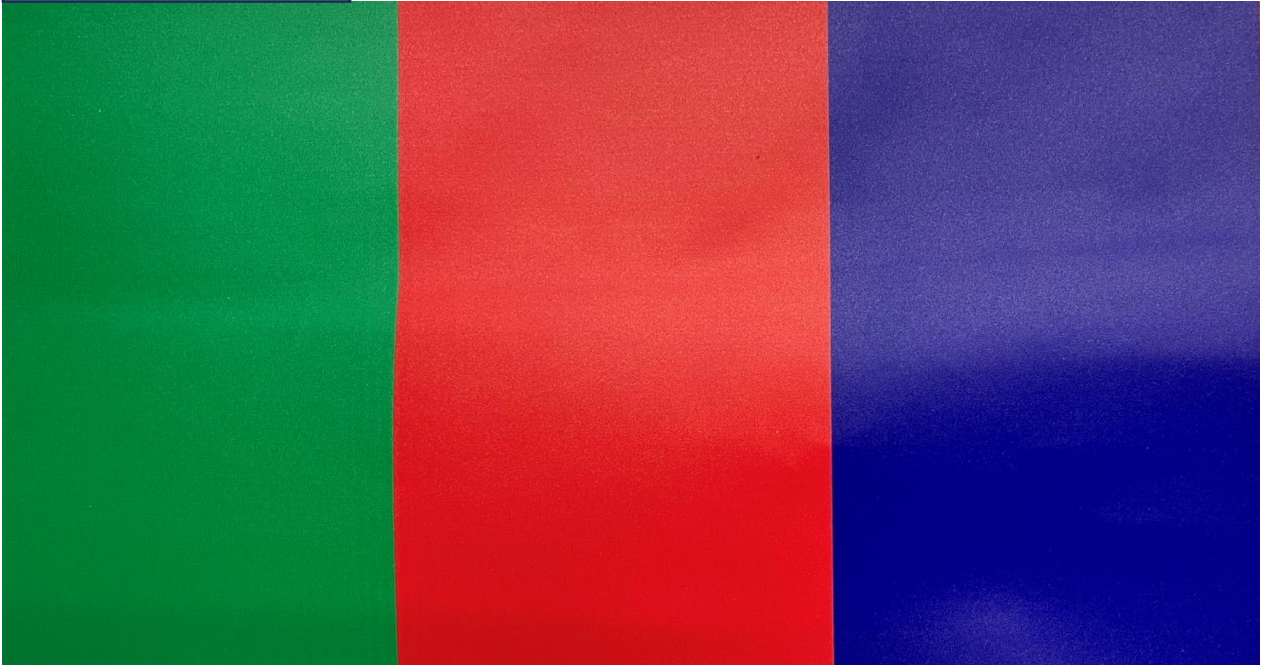
Beautiful solid colors with reduced streaks and unevenness

UJV200



UJV200-160 4C+SP 1200 x 600 dpi 8pass
Auto-adjust with DAS2

UJV100



UJV100-160 4C+SP 720 x 900 dpi 12pass
Auto-adjustment with DAS

Sharp fine lines

UJV200

2pt 株式会社ミマキエンジニアリング 〒389-0152 長野県東御市滋野乙2182-3

3pt 株式会社ミマキエンジニアリング 〒389-0152 長野県東御市滋野乙2182-3

4pt 株式会社ミマキエンジニアリング 〒389-0152 長野県東御市滋野乙2182-3

5pt 株式会社ミマキエンジニアリング 〒389-0152 長野県東御市滋野乙2182-3

6pt 株式会社ミマキエンジニアリング 〒389-0152 長野県東御市滋野乙2182-3

7pt 株式会社ミマキエンジニアリング 〒389-0152 長野県東御市滋野乙2182-3

7pt 株式会社ミマキエンジニアリング 〒389-0152 長野県東御市滋野乙2182-3

6pt 株式会社ミマキエンジニアリング 〒389-0152 長野県東御市滋野乙2182-3

5pt 株式会社ミマキエンジニアリング 〒389-0152 長野県東御市滋野乙2182-3

4pt 株式会社ミマキエンジニアリング 〒389-0152 長野県東御市滋野乙2182-3

3pt 株式会社ミマキエンジニアリング 〒389-0152 長野県東御市滋野乙2182-3

2pt 株式会社ミマキエンジニアリング 〒389-0152 長野県東御市滋野乙2182-3

UJV100

2pt 株式会社ミマキエンジニアリング 〒389-0152 長野県東御市滋野乙2182-3

3pt 株式会社ミマキエンジニアリング 〒389-0152 長野県東御市滋野乙2182-3

4pt 株式会社ミマキエンジニアリング 〒389-0152 長野県東御市滋野乙2182-3

5pt 株式会社ミマキエンジニアリング 〒389-0152 長野県東御市滋野乙2182-3

6pt 株式会社ミマキエンジニアリング 〒389-0152 長野県東御市滋野乙2182-3

7pt 株式会社ミマキエンジニアリング 〒389-0152 長野県東御市滋野乙2182-3

7pt 株式会社ミマキエンジニアリング 〒389-0152 長野県東御市滋野乙2182-3

6pt 株式会社ミマキエンジニアリング 〒389-0152 長野県東御市滋野乙2182-3

5pt 株式会社ミマキエンジニアリング 〒389-0152 長野県東御市滋野乙2182-3

4pt 株式会社ミマキエンジニアリング 〒389-0152 長野県東御市滋野乙2182-3

3pt 株式会社ミマキエンジニアリング 〒389-0152 長野県東御市滋野乙2182-3

2pt 株式会社ミマキエンジニアリング 〒389-0152 長野県東御市滋野乙2182-3

UJV200-160 4C+SP 1200 x 600 dpi 8pass
Auto-adjustment with DAS2

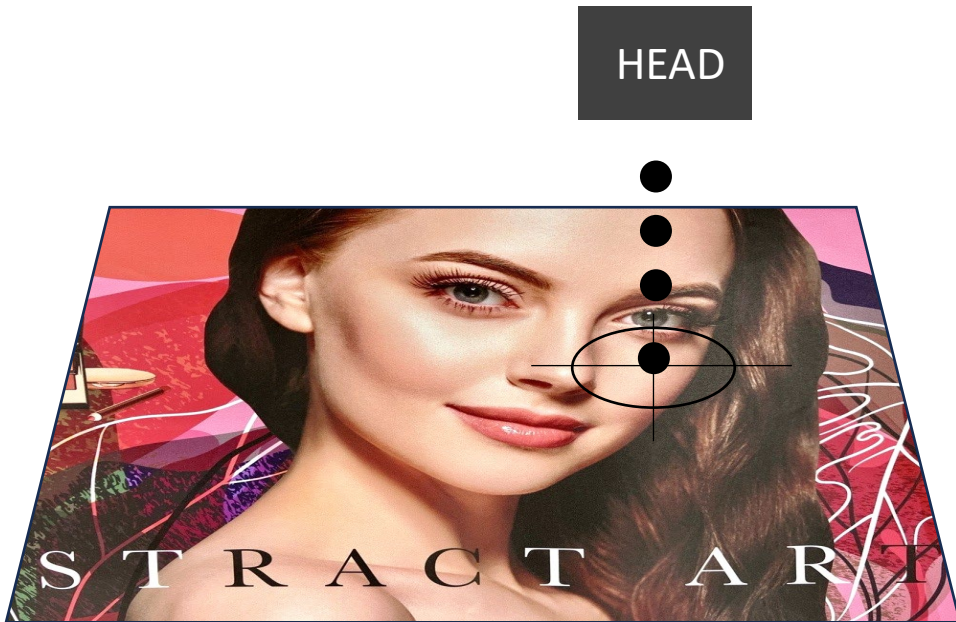
UJV100-160 4C+SP 720 x 900 dpi 12pass
Auto-adjustment with DAS

330-Nozzle control technology for high image quality

Minimum 4pl

Precise control down to the finest ink droplets

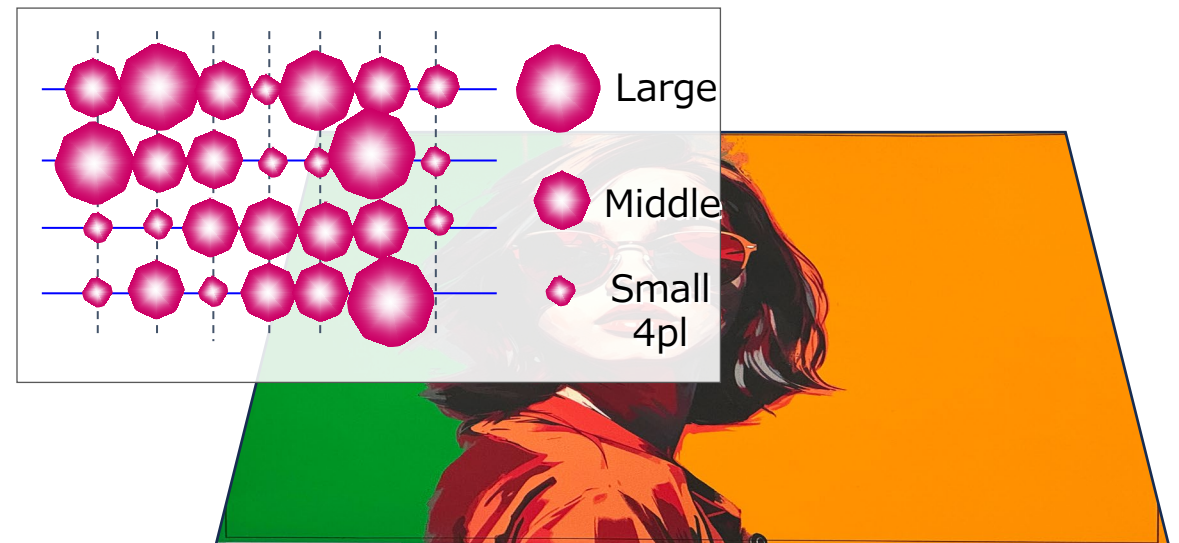
By precisely ejecting ink at the intended point, it achieves high image quality **without a grainy feel**.



Calculated **High-density ink** ejection beautiful solid ink coverage

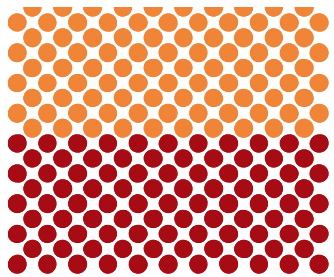
Precise control of three different ink sizes.

Large ink droplets fill solid areas beautifully, while the combination with small dots to achieve rich gradations and high image quality.



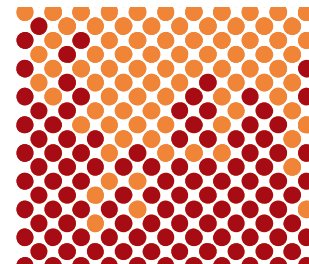
MAPS4 (Banding Reduction System) to suppress streaks and unevenness

● Without MAPS



Prints without blurring path boundaries, **making streaks and unevenness more likely**

● With MAPS



Prints with a gradient effect and by blurring path boundaries, resulting in **high-quality prints without streaks or unevenness.**

02. Optimal Quality for anyone. Simple Operation.

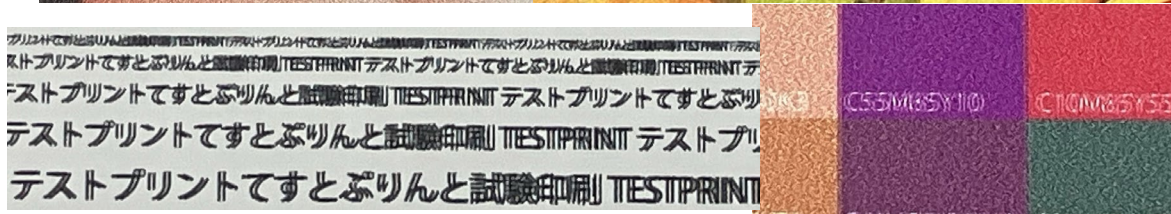


Manual adjustments mean image quality depends on the operator's skill...

 **Auto Adjust**
DAS2 (Dot Adjustment System 2)

Adjustment is done with **just button operations**.
Optimal picture quality **for anyone**.

Before auto-adjustment

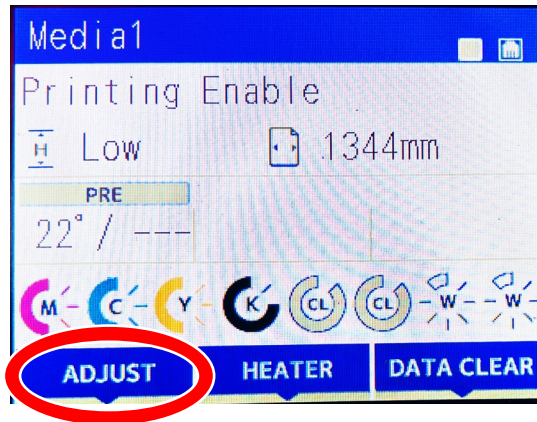


After auto-adjustment

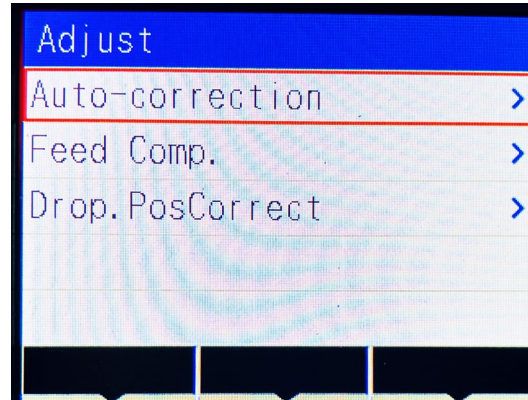


Adjustments are made with **button operations only.**

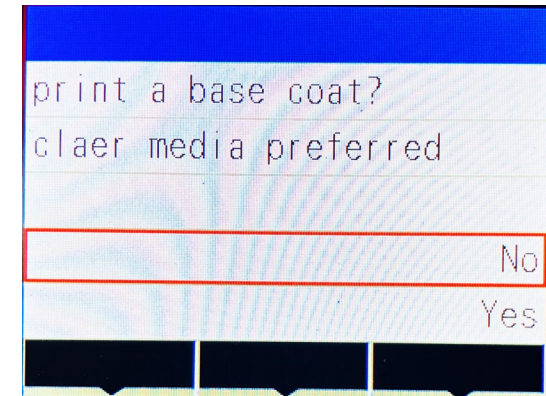
1 Select "ADJUST"



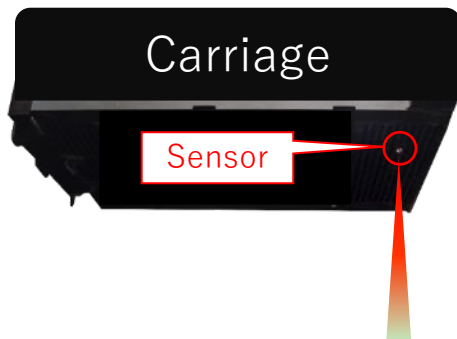
2 Select "Auto Correction"



3 Select whether to print white ink as a base coat



Optimal image quality **for anyone.**



Print a **dedicated test pattern** onto the media and using the **high-precision RGB sensor** mounted on the carriage,

- ① Dot position (where dots land during Bi-directional printing)
- ② Feed (media feed amount)

for all resolutions.

**Adjustment
Fast**

**Media
Waste is minimized**

**Supported media
Wide range of**

〈Comparison with All Resolution Adjustments〉

Adjustment Method	DAS2 (UJV200)	DAS (UJV100plus)	Manual Adjustment
Sensor	High-precision RGB sensor reads all colors	Light sensor reads K only	-
Adjustment Time	Approx. 7min	Approx. 16 min.	Varies by person
Media Usage	Approx. 4.7 inch	Approx. 15 inch~	Approx. 13 inch~*2
Compatible media	Transparent, colored, etc. Any media possible*1	White-background media	Primarily white media Media other than white backgrounds may have patterns that difficult to scan and adjust

**Approx. 60%
reduction**

**Approx. 70%
reduction**

As **white ink can be printed as a base coat**, the system automatically adjusts the image to achieve optimal quality on **any media**.*1!



+ As it adjusts automatically, you can perform other tasks while it is adjusting.

*1 Excludes 4-color ink sets *2 Requires printing the feed correction pattern twice (pre-adjustment check + post-adjustment check) and printing the dot position correction pattern at all resolutions

03. High-Value Prints on Any Media

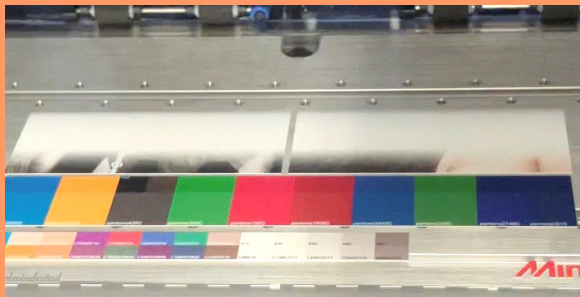


High-precision multi-layer printing up to 3 layers

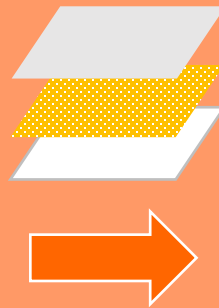
Stable output for large-format results with multi-layer printing without pullback*

*When using clear gloss, retraction is required

For window signs, large signs, and other applications
for large-format printing applications
High-value-added printing is possible even for small quantities



Without pulling back
One-step output
Even with long lengths
Stable output



Expressions achievable with two-layer printing



Transparent Media



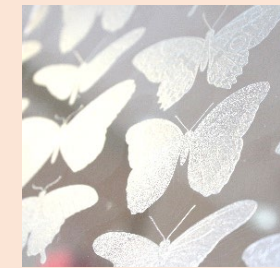
Colored media



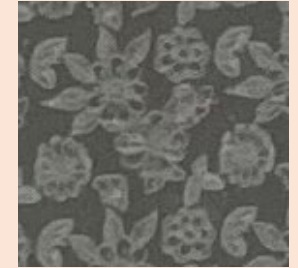
Effects achievable with clear ink



Glossy printing

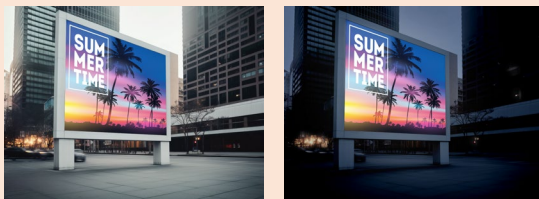


Matte finish printing



Texture effect

Expressions achievable with 3-layer printing



Beautiful illuminated signage day and night

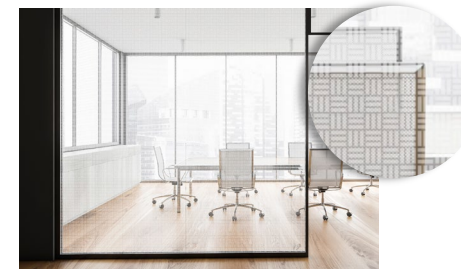
Beautiful color reproduction achieved with lights ON and OFF



Visible from both sides
Vibrant window signs



Color/White/Color
Three-layer printing



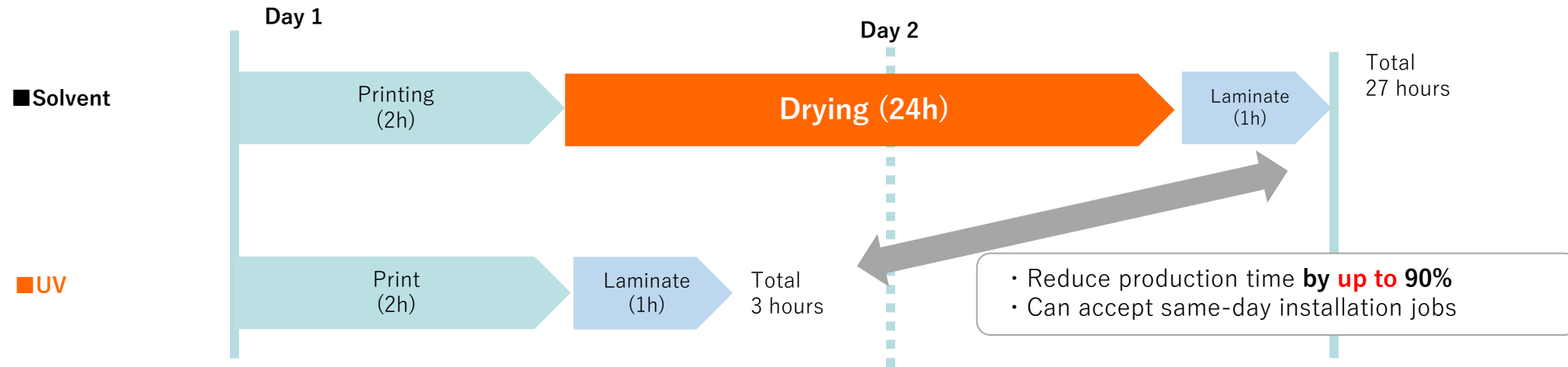
ARTISTA UV Texture Library

Combined with the UJV200
Expand your texture expression possibilities!

Features 129 patterns usable as swatches in Adobe Illustrator

UV printing enables **immediate post-processing and delivery after printing**

UV light (ultraviolet light) is applied immediately after printing to instantly cure the ink, eliminating drying time and dramatically improving work efficiency.



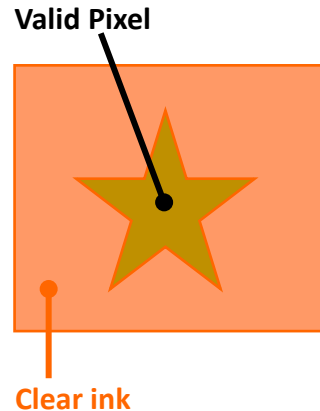
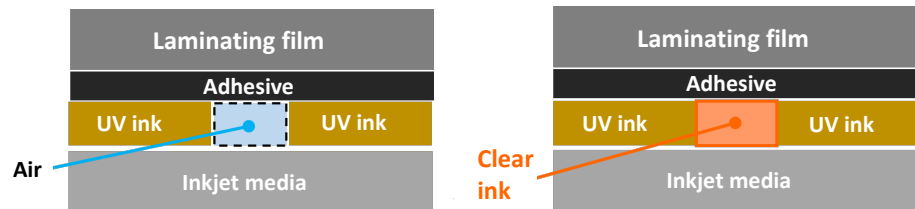
Features "**LamiFit**" technology ⇒ Resists silvering* even after lamination

*Caused by trapped air whitening of graphics

LamiFit

Fills areas without data with clear ink


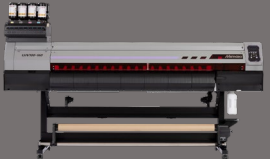
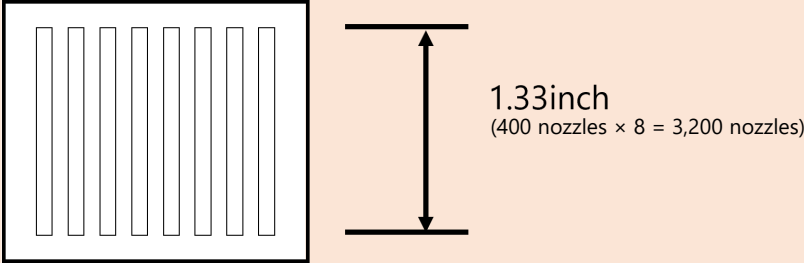
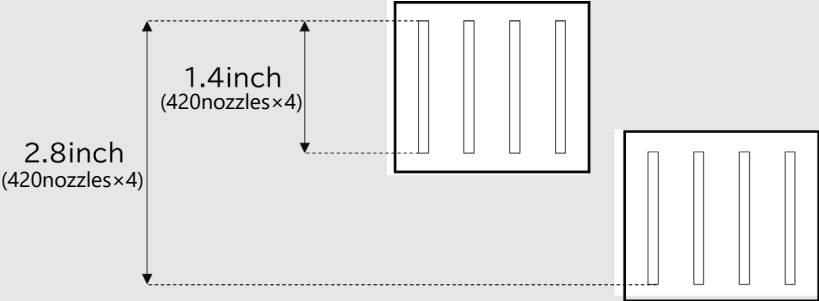
to reduce **surface irregularities**, making it less prone to air entrapment during lamination and reduce the likelihood of air bubbles forming during lamination.



Standard Printing + Standard Laminate Film (PLS-G)	trapped air
Standard Printing + Anti-silvering laminate film (Mimaki Vision Laminate 310)	
Printing using " LamiFit " + Standard laminate film	

UJV200-160/UJV100-160plus Key Specifications Comparison

See also
p. 24, 39, 41, 44

Item	UJV200-160 	UJV100-160plus 
Head Configuration	<p>Single Head (Select from 4C/4C+W*/4C+W+CL) *Only LUS-210</p>  <p>1.33inch (400 nozzles × 8 = 3,200 nozzles)</p>	<p>2-Staggered Arrangement (Select from 4C/4C+W/W+4C/4C+W+CL)</p>  <p>1.4inch (420nozzles×4)</p> <p>2.8inch (420nozzles×4)</p>
Printing Speed (4C/Single Layer)	<p>14.0 m²/h (150.7 sqft/h) (4C Standard: 600 × 600 dpi/6pass)</p>	<p>13.6 m²/h (146.4 sqft/h) (4C Standard: 720 × 900 dpi/12 pass)</p>
Multi-layer printing No retraction required	<p>No pullback required even during 3-layer printing *Except when using clear gloss</p>	<p>Pullback may be required during multi-layer printing ※Required during 3-layer printing (and 2-layer printing depending on selected head configuration)</p>
Cleaning time	<p>Normal: 2 min 53 sec</p>	<p>Normal: 4 min 11 sec</p>
External Dimensions & Weight	<p>2,770mm × 748mm × 1,405mm / 160kg</p>	<p>2,775mm × 700mm × 1,475mm / 167kg</p>

Reliable Mimaki Quality

01. Reliable Print Speed

02. High ink performance

01. Reliable printing speed

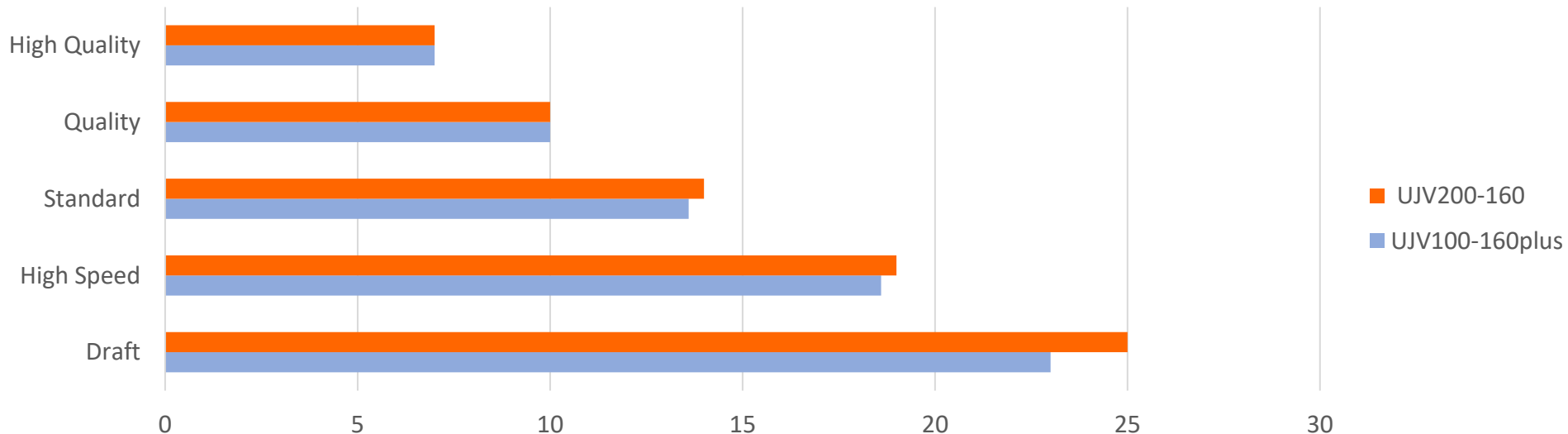
4Color PVC/Banner/Synthetic Paper

4Color

Practical **14.0 m²/h**
(150.7sqft/h)

Mode	UJV200 series				UJV100-160plus		
	Resolution (dpi)	Pass	160 width	130 width	Resolution (dpi)	Pass	
High Quality	1200 x 1200	8pass	7.0 m ² /h (75.3sqft)	6.0 m ² /h (64.6sqft)	1200 x 1200	16pass	7.0 m ² /h (75.3sqft)
Quality	1200 x 600	6pass	10.0 m ² /h (107.6sqft)	9.0 m ² /h (96.9sqft)	720×900	16pass	10.0 m ² /h (107.6sqft)
Standard	600 x 600	6pass	14.0 m ² /h (150.7sqft)	13.0 m ² /h (139.9sqft)	720×900	12pass	13.6 m ² /h (146.4sqft)
High Speed	600 x 600	5pass	19.0 m ² /h (204.5sqft)	18.0 m ² /h (193.8sqft)	360×1200	8pass	18.6 m ² /h (200.2sqft)
Draft	600 x 600	4pass	25.0 m ² /h (269.1sqft)	22.0 m ² /h (236.8sqft)	360×900	6pass	23.0 m ² /h (247.6sqft)

160 width print speed



*There is no draft mode setting for PVC.

01. Reliable printing speed

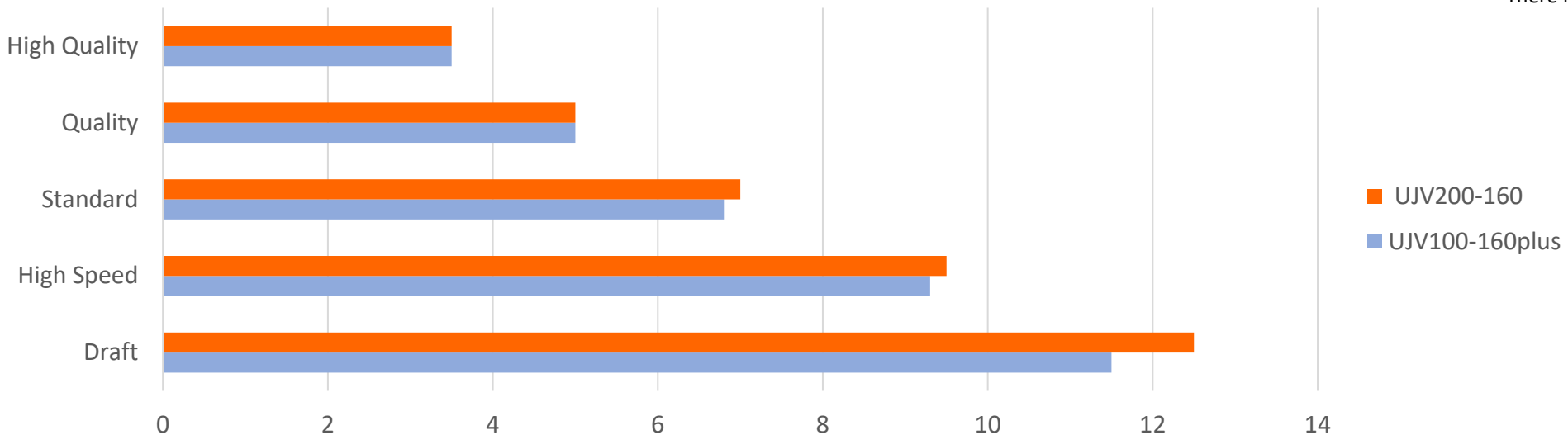
4Color+SP
Single-layer printing

Practical **7.0m²/h**
(75.3sqft/h)

4Color+SP PVC / Banner / Synthetic Paper

		UJV200 series			UJV100-160plus		
Mode	Resolution (dpi)	Pass	160 width	130 width	Resolution (dpi)	Pass	160 width
High Quality	1200 x 1200	16pass	3.5 m ² /h (37.7sqft)	3.0 m ² /h (32.3sqft)	1200 x 1200	16pass	3.5 m ² /h (37.7sqft)
Quality	1200 x 600	12pass	5.0 m ² /h (53.8sqft)	4.0 m ² /h (43.1sqft)	720×900	16pass	5.0 m ² /h (53.8sqft)
Standard	1200 x 600	8pass	7.0 m ² /h (75.3sqft)	6.0 m ² /h (64.6sqft)	720×900	12pass	6.8 m ² /h (73.2sqft)
High Speed	900 x 600	8pass	9.5 m ² /h (102.3sqft)	8.5 m ² /h (91.5sqft)	360×1200	8pass	9.3 m ² /h (100.1sqft)
Draft	600 x 600	8pass	12.5 m ² /h (134.6sqft)	11.0 m ² /h (118.4sqft)	360×900	6pass	11.5 m ² /h (123.8sqft)

160 width print speed



*There is no draft mode setting for PVC.

01. Reliable printing speed

For 2-layer printing

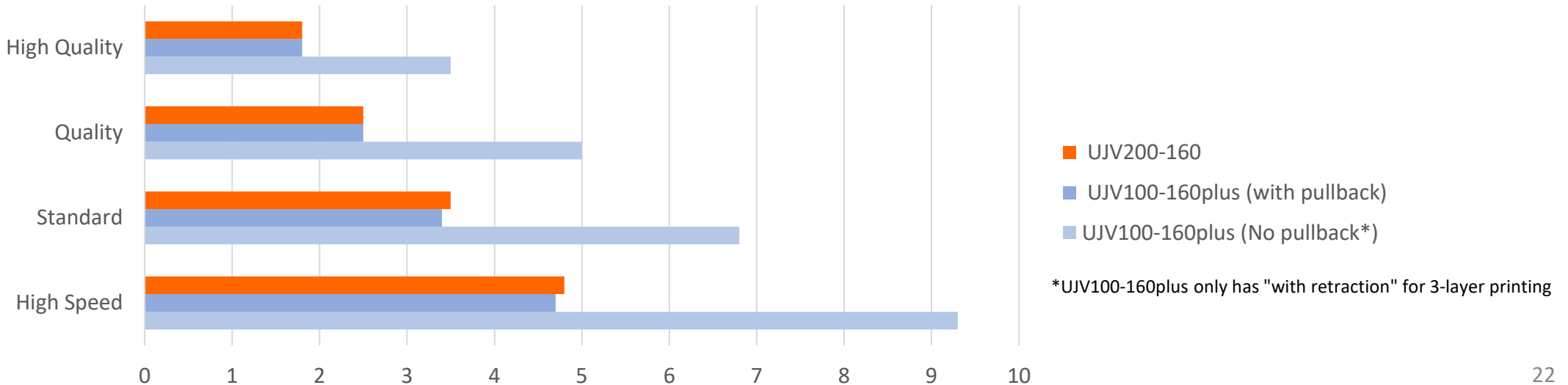
Practical **3.5 m²/h**
(37.7 sqft/h)

4Color+SP PVC/Banner/Synthetic Paper

*Media retraction operation time and RIP time after retraction excluded

Mode	UJV200 series				UJV100-160plus			
	Resolution (dpi)	Pass	160 width	130 width	Resolution (dpi)	Pass	With pullback	No pullback*
High Quality	1200 x 1200	16pass	1.8 m ² /h (19.4sqft)	1.5 m ² /h (16.1sqft)	1200 x 1200	16pass	1.8 m ² /h (19.4sqft)	3.5 m ² /h (37.7sqft)
Quality	1200 x 600	12pass	2.5 m ² /h (26.9sqft)	2.0 m ² /h (21.5sqft)	720 x 900	16pass	2.5 m ² /h (26.9sqft)	5.0 m ² /h (53.8sqft)
Standard	1200 x 600	8pass	3.5 m ² /h (37.7sqft)	3.0 m ² /h (32.3sqft)	720 x 900	12pass	3.4 m ² /h (36.6sqft)	6.8 m ² /h (73.2sqft)
High Speed	900 x 600	8pass	4.8 m ² /h (51.7sqft)	4.3 m ² /h (46.3sqft)	360 x 1200	8pass	4.7 m ² /h (50.6sqft)	9.3 m ² /h (100.1sqft)

160 width print speed



01. Reliable printing speed

For 3-layer printing

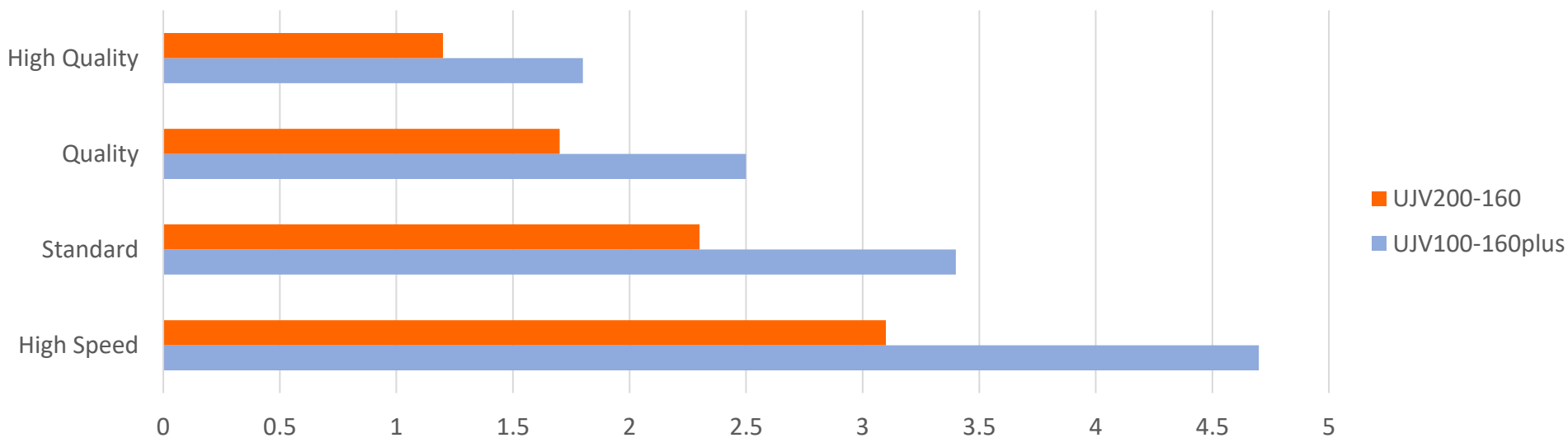
Practical **2.3m²/h**
(24.8sqft/h)

4Color+SP PVC/Banner/Synthetic Paper

*Media retraction operation time and RIP time after retraction excluded

Mode	UJV200 series				UJV100-160plus		
	Resolution (dpi)	pass	160 width	130 width	Resolution (dpi)	pass	160 width
High Quality	1200 x 1200	16pass	1.2m ² /h (12.9sqft)	1.0m ² /h (10.8sqft)	1200 x 1200	16pass	1.8m ² /h (19.4sqft)
Quality	1200 x 600	12pass	1.7m ² /h (18.3sqft)	1.3m ² /h (14.0sqft)	720 x 900	16pass	2.5m ² /h (26.9sqft)
Standard	1200 x 600	8pass	2.3m ² /h (24.8sqft)	2.0m ² /h (21.5sqft)	720 x 900	12pass	3.4m ² /h (36.6sqft)
High Speed	900 x 600	8pass	3.1m ² /h (33.4sqft)	2.8m ² /h (30.1sqft)	360 x 1200	8pass	4.7m ² /h (50.6sqft)

160幅印刷速度



About multi-layer printing, at a disadvantage compared to the UJV100plus?

→The UJV200 has the advantage of **not requiring pull back**

- ① Capable of multi-layer printing on **long lengths**
- ② **Consistent speed** regardless of printing modes

UJV100plus

Pull back is required during 3-layer printing and some 2-layer printing*1.

- Pull back makes long-length printing difficult.
Specification: Within **1,000** mm
- Printing speed varies depending on whether pull back is required.

	2-layer printing (No pull back)	2-layer printing (with pull back)
Standard (720 × 900/12pass) Printing speed	6.8m²/h (73.2sqft/h)	3.4m²/h (36.6sqft/h)

UJV200

No pull back required in most cases.*2

- Multi-layer printing can also be done in **long runs**, similar to single-layer printing*2
- **Consistent speed** regardless of printing modes

	Standard (1200 × 600/8pass) Printing speed	2-layer printing
		3.5m²/h (37.7sqft/h)

Equivalent or better

*1 Pull back is required either for color→white or white→color. Which direction requires it depends on the ink set included with the printer at the time of purchase.

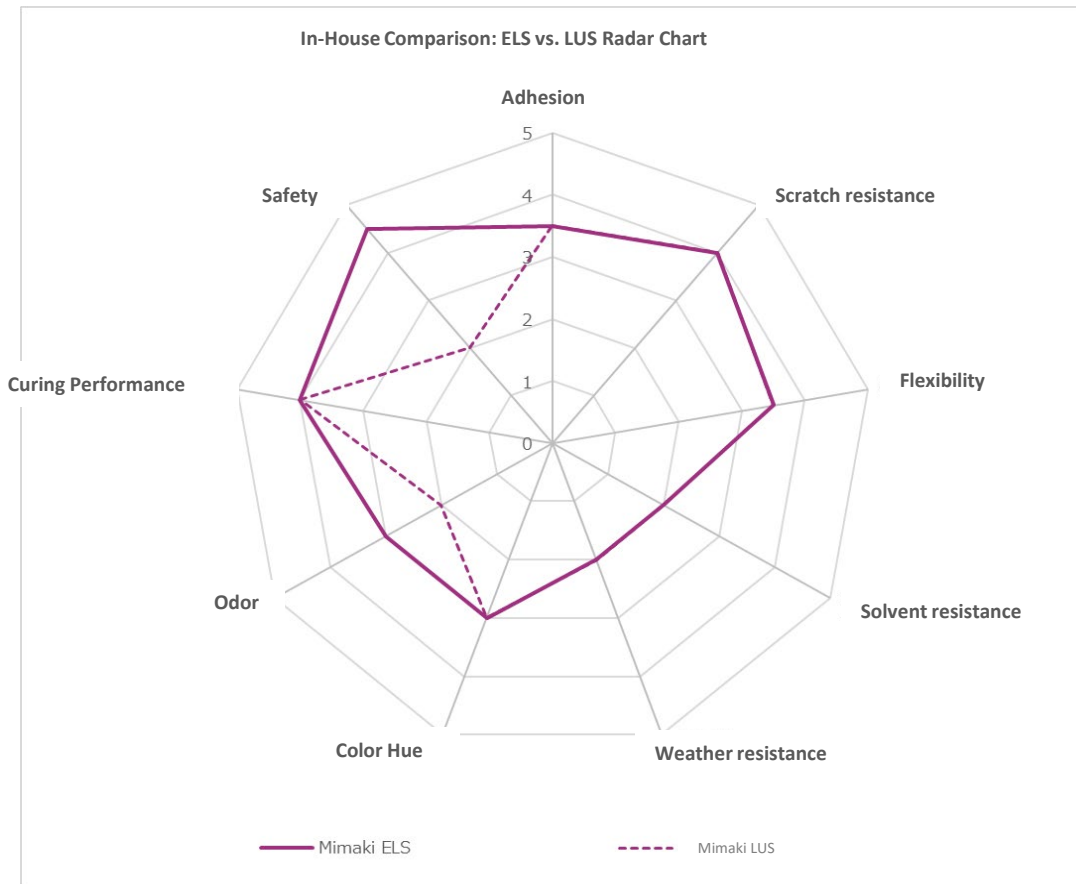
*2 Pull back is required when printing with clear gloss. Specification: Within 1,000mm

02. High ink performance

LUS Ink Evolves! Even Easier to Use.



Ink with **30%** reduced^{*1} odor



*1 Compared to conventional LUS ink

- ✓ Achieved odor reduction—a more worker-friendly ink
- ✓ Performance maintained using Mimaki's proprietary formulation know-how

One of the least odorous inks in the industry

Achieves a comfortable working environment

*Internal evaluation results; accuracy is not guaranteed.

SVHC-free

SVHC refers to...

Substances of **Very High Concern** (SVHC) are chemicals considered to pose extremely high risks to human health and the environment. Under the EU's REACH regulation, products (ink and printed materials) containing applicable substances exceeding 0.1% by weight are highly likely to become prohibited for both sale and use within a few years.

CMR-Free*

CMR refers to...

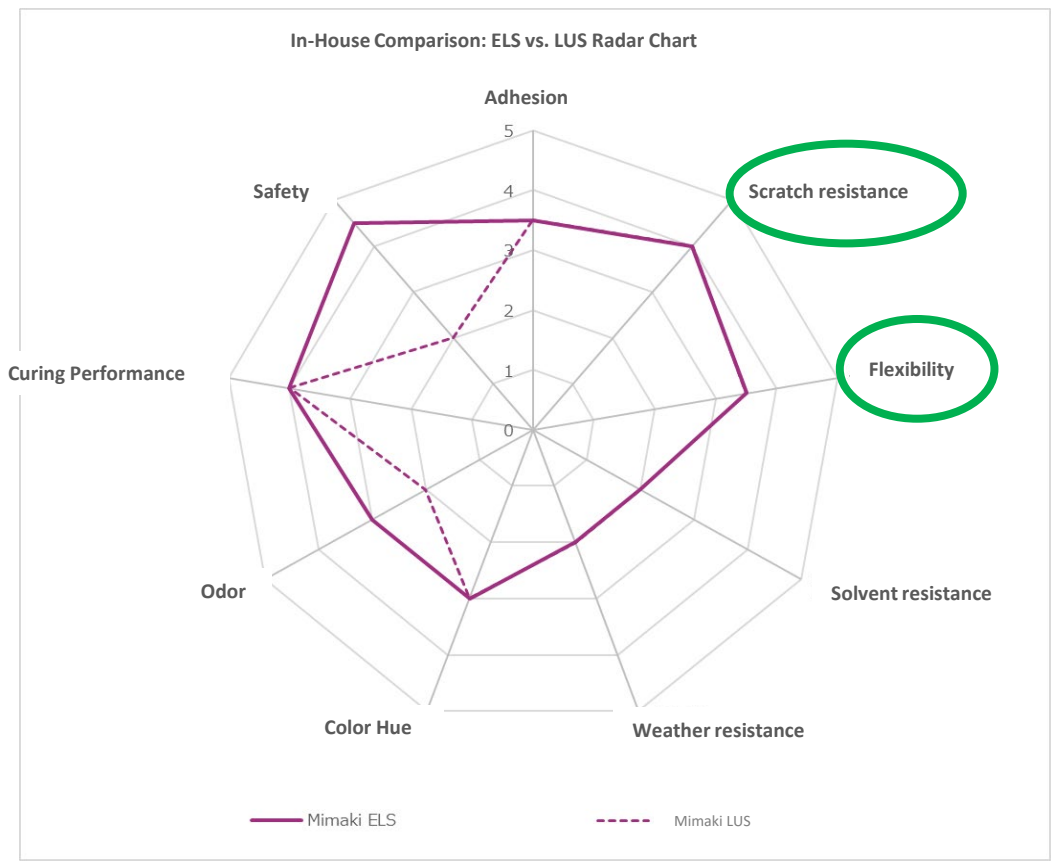
Refers to substances containing **Carcinogenic, Mutagenic, or Reprotoxic** factors. From cosmetics manufacturers and major apparel companies to pesticide use in vineyards, an increasing number of companies worldwide are banning or restricting the use of CMR substances to protect the health of those handling them and the global environment.

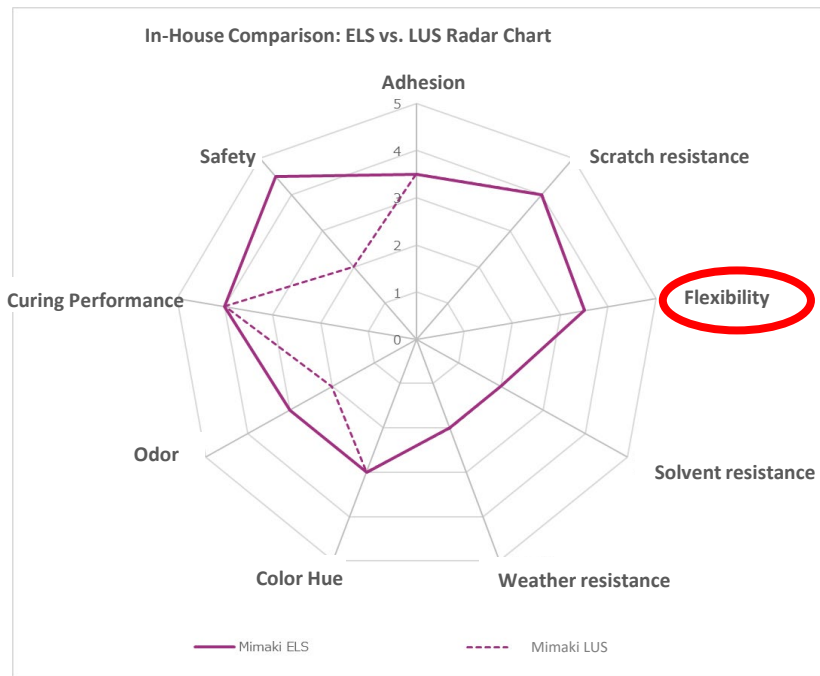
*As of March 2026, this indicates that, under the EU CLP Regulation, the substance is not classified as a CMR in the category of Ink.

ELS has the solution!

Safety Performance That Leads the Way
 Ink components free of carcinogenic substances ensure peace of mind for printing workers
 Protecting the health of employees, who are vital to business owners!

Highly stretchable and abrasion-resistant Roll media printing and installation on roll media





Approx. 170% stretchability
Flexible UV ink performance and functionality fully retained

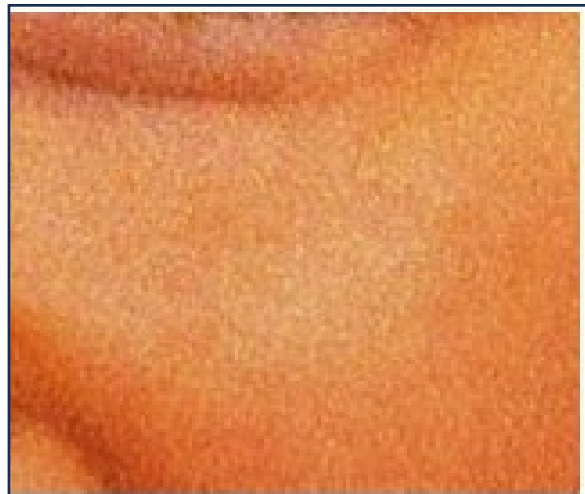


*Photo is for illustrative purposes only

Equivalent image quality

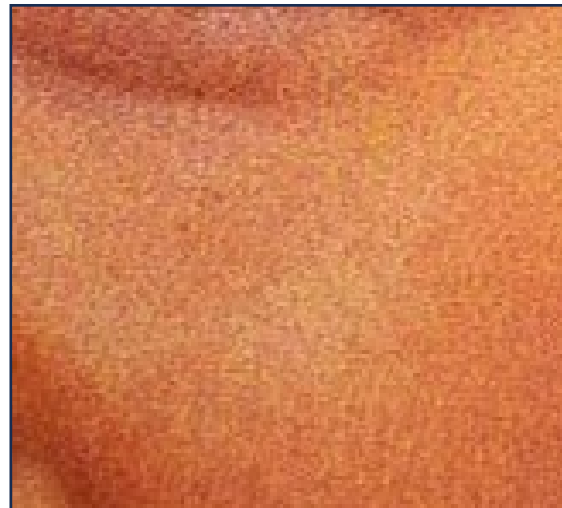
LUS

Ink consumption: **14.1cc**

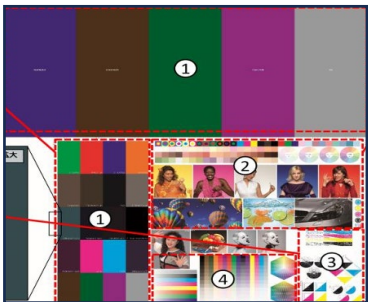


ELS

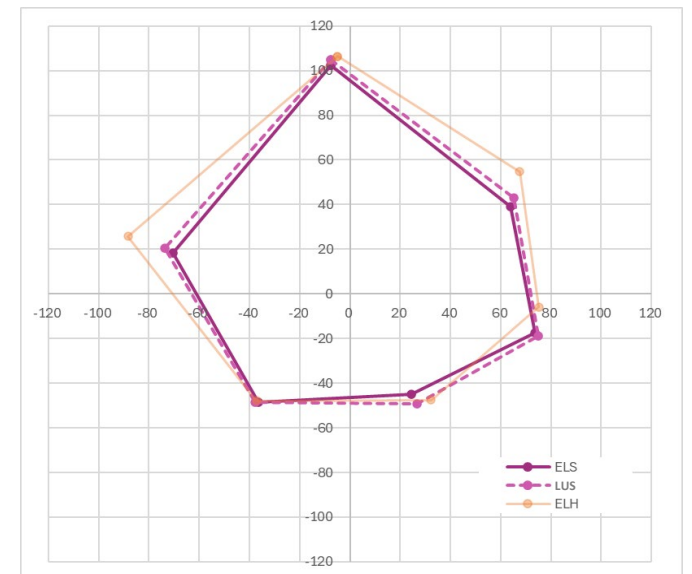
Ink Consumption: **15.6 cc**



4C (Ink composition)



Color Reproducibility



* These are internal evaluation results and do not guarantee accuracy.



Delivers performance nearly equivalent to LUS-170

High scratch resistance and flexibility

ensure reliable output and application on roll media





Features that delight users

- Peace of mind for emergencies
- Software that supports your work
- Simplify Daily Tasks

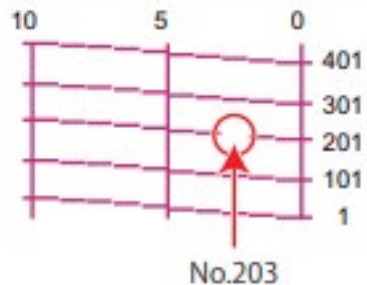
01. Peace of mind for emergencies

Nozzle Recovery

No downtime due to nozzle issues

When nozzle misfires occur that cannot be resolved by cleaning, printing continues using an alternate nozzle instead of the faulty one.

Printing speed remains unchanged even when using nozzle recovery, so you can proceed with your work as usual.



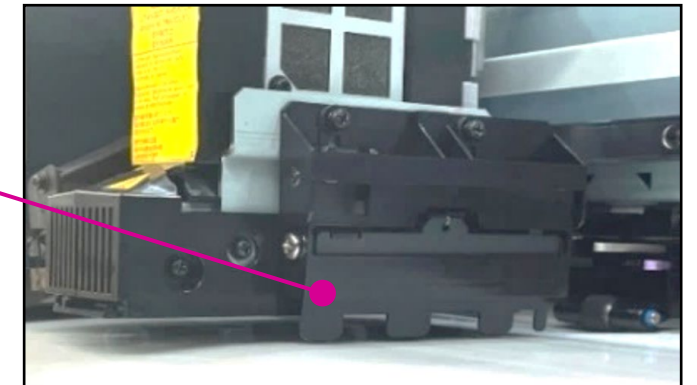
Up to **20** per nozzle
Up to **160** nozzles can be registered per head

Jam Sensor

Reduces the risk of head abrasion

To prevent the print head surface from directly hitting media, etc., Sensors attached to the head reduce the risk of head damage.

Before the head collides, the sensor reacts and stops printing.

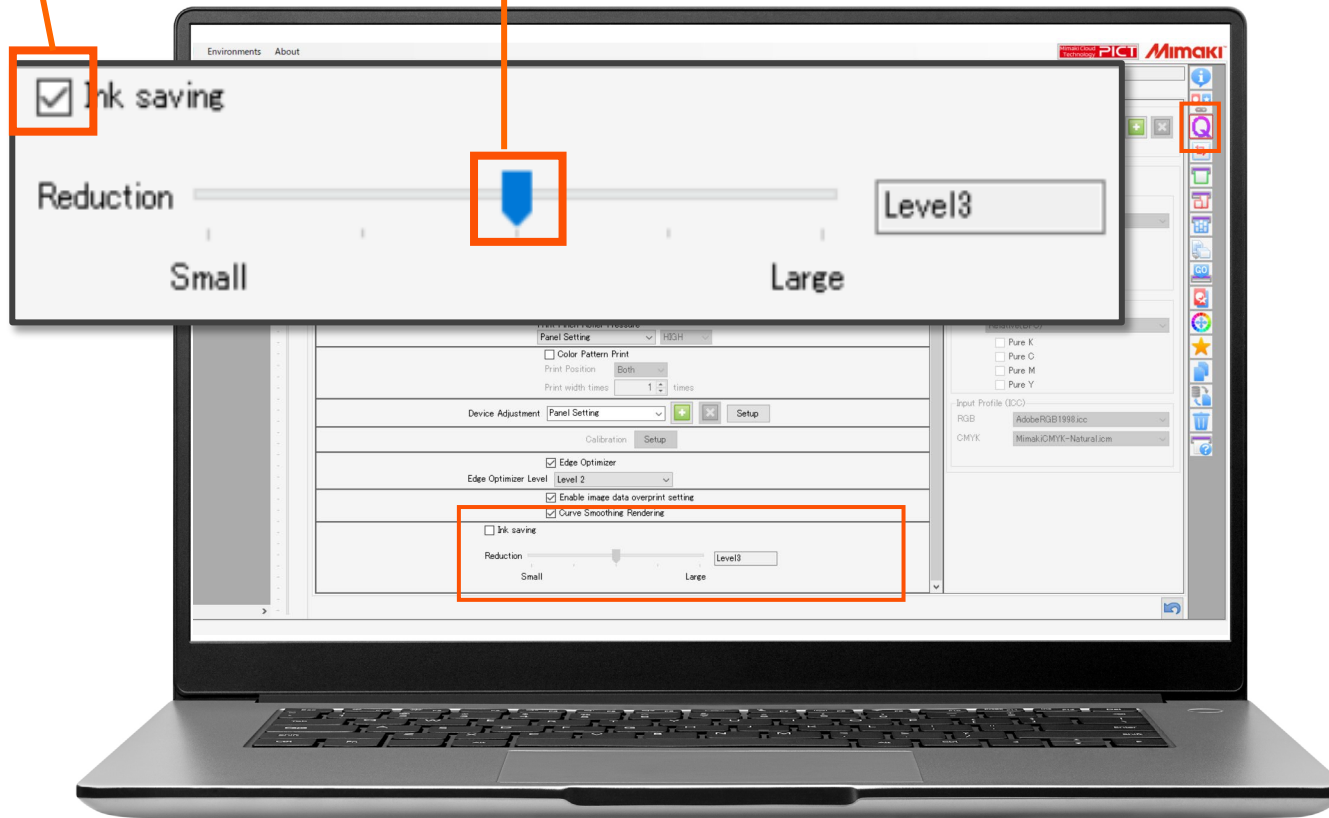


02. Business Support Software

Reduce ink consumption with just 2 clicks Ink Save Function

① Check the ink save box

② Select the reduction rate



Adjustable in 5 levels:
Level 1 to Level 5

(Approx. 10% reduction to approx. 50% reduction)

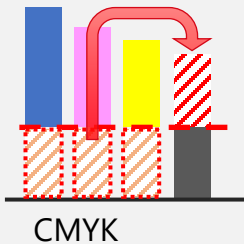
By using it according to your business needs

Reduce running costs

Any media profile while preserving natural color tones.

As an independent feature within Raster Link
No need to change ICC profiles or create dedicated profiles.

What principle reduces ink consumption?



Level 1 to Level 3
CMY ink is replaced with K ink



At LEVEL4 and above, the color gamut is narrowed, further reducing ink consumption

- The ink saving function replaces CMY ink with K ink, which may cause noticeable graininess depending on the data.
- Higher levels narrow the reproducible color gamut to reduce ink consumption, which significantly impacts color appearance and image quality.
- Adjust the level according to your workflow and the images being printed.

While preserving natural color tones minimizing ink costs



Design software anyone can use easily

Even if you're not familiar with professional DTP software, you can easily create Intuitive software for creating seals, labels, POP displays, stickers, and more

Simple Create included as standard



- Simple and intuitive operation requiring no manual
- Output instructions can also be given from Simple Create
- Compatible with Windows, macOS, iOS, and Android



Combine the UJV200 with Simple Create to bring design creation in-house or start a sticker business!



Stickers



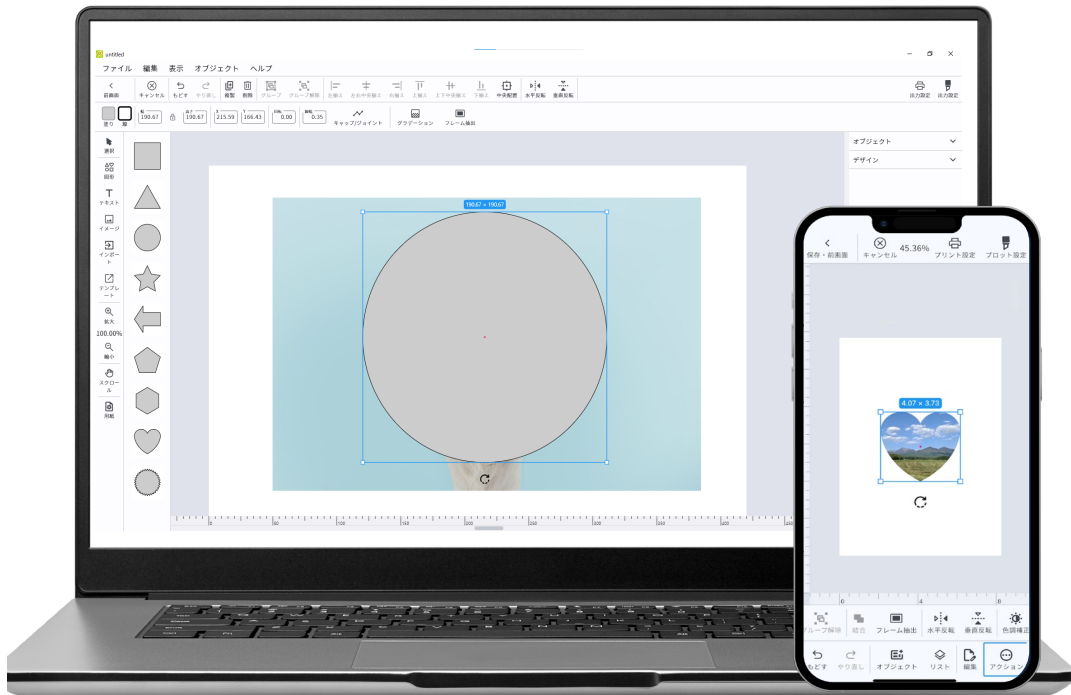
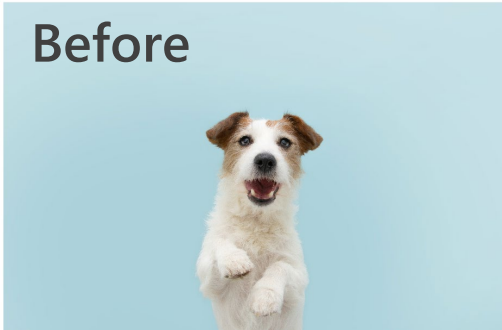
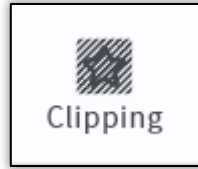
POP



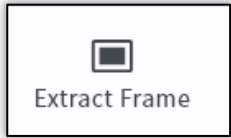
Decal

Simple Create: Easy-to-Use Tool Introduction

Cut out any shape with **1Click**



Create frames with **one button**



Easily create playful designs and cut lines!

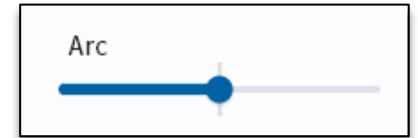
Before



After



Add playful touches to text with 1Click



Before

Happy Birthday

After

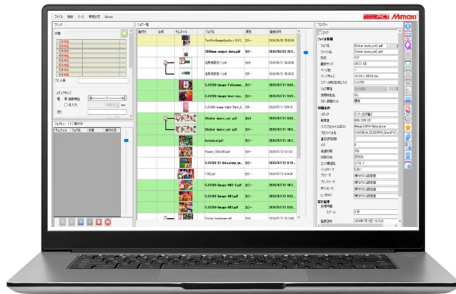
Happy Birthday

Both the printer and the cutting plotter

Can be operated simultaneously from a single Raster Link

- Simultaneous operation reduces processing time
- Instructions use the same data as printing
Reduces setup errors

Raster Link



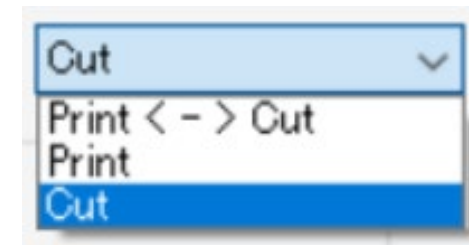
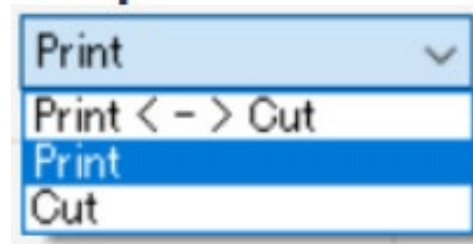
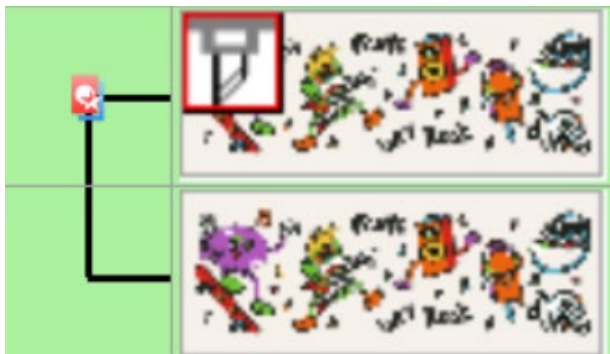
can only load one job at a time



Print output



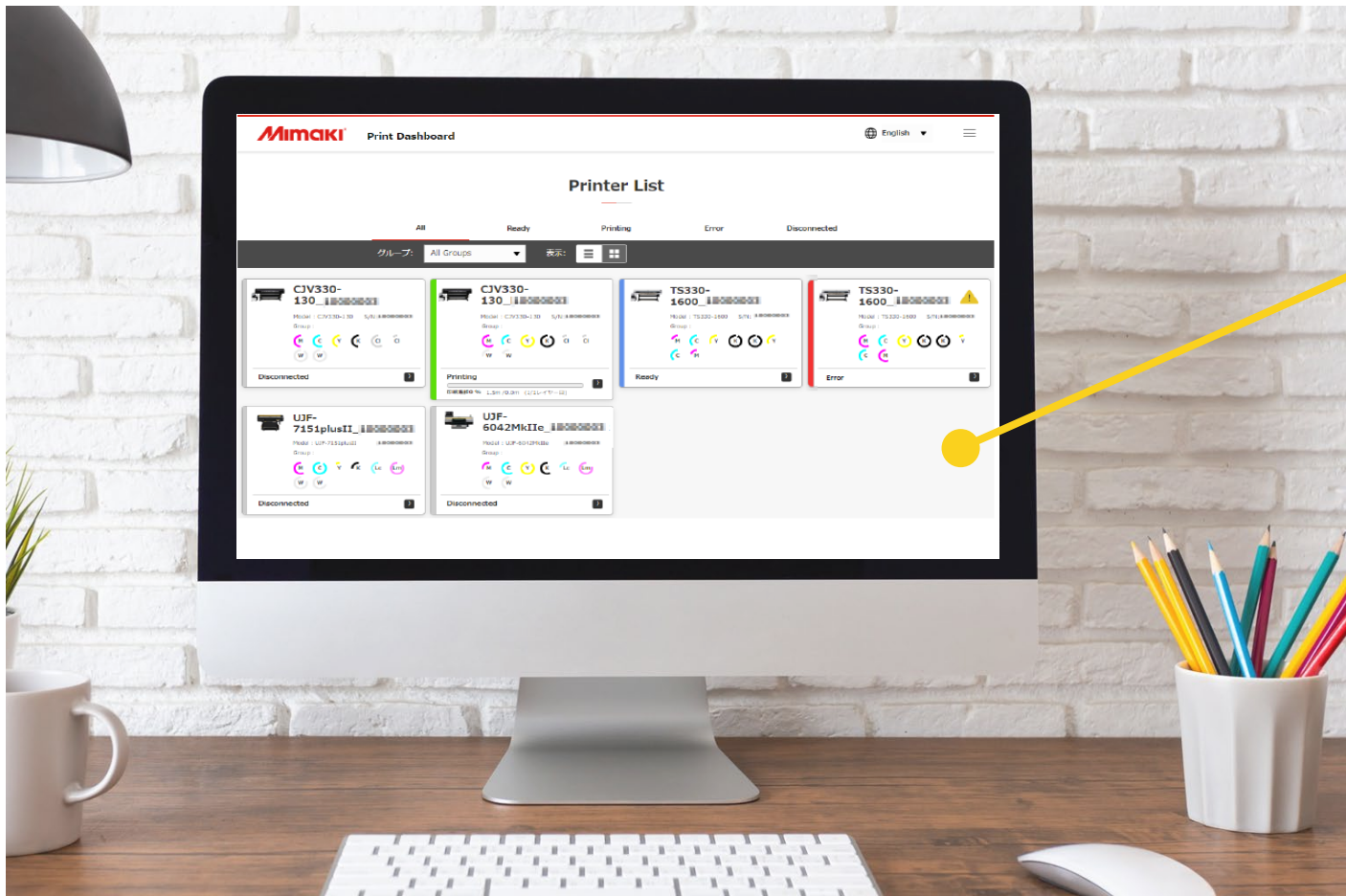
Cut Output



Cloud Service Connecting Mimaki and Customers

PICT: Supporting Operational Efficiency and Peace of Mind

Keep track of every detail about your printers anytime, anywhere



It automatically monitors the operational status of all your machines

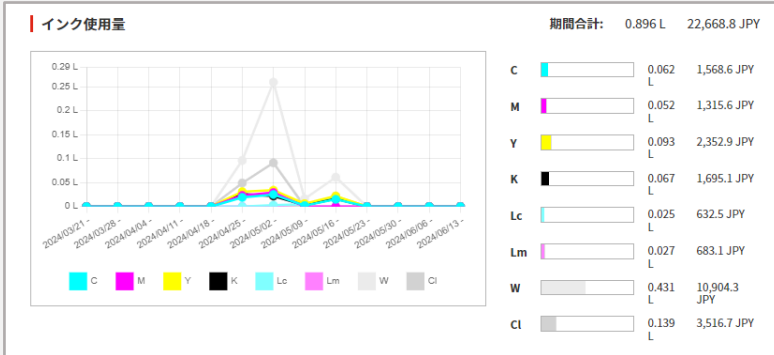
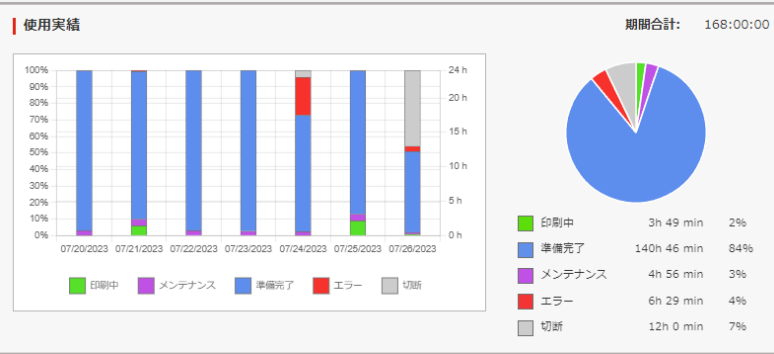
- Operational status of all owned machines
- Details of machine issues
- Ink usage

PICT automatically aggregates this data

Features error and print completion notifications, allowing you to check the status immediately even from a remote location.

Available for download from our website. Accessible via web browsers on PCs and mobile devices.

Today, this week, this month
All operational performance data
is available



Reporting on operational performance
and ink usage
Supporting planned operations and cost
management.

Get faster, more accurate support
Faster, more precise support



Share error information
(log information)



Based on machine error information, we
can predict the cause of the problem,
enabling faster and more precise support
than ever before.

Even if you're not there while printing
Check the print status on your
smartphone



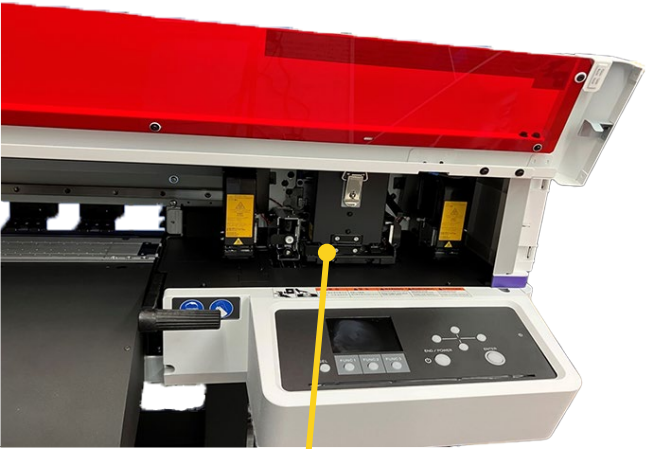
Get email notifications when printing
finishes or errors occur!
Get notified by email!

03. Simplify everyday tasks

Simplicity that delivers three "easier-to" benefits

"Easy to Work With"

Large-opening cover



"Easy to check"

Upward-facing panel



"Easy to maintain"

Single-head design

Pens, tape, cutters, etc.
A little extra space is appreciated



03. Simplify daily tasks

Simple design means **tasks move smoothly**

Cleaning Wait Time

Approx. **30%**
reduction

*Comparison between Normal Cleaning



	UJV100plus	UJV200
Soft:	3 min 43 sec	2 min 37 sec
Normal:	4 min 11 sec	2 min 53 sec
Hard:	4 min 30 sec	3 min 09 sec

Other Specifications

- Optional Items
- Supplies
- Size, Packaging, Installation Environment
- Product Specifications
- Ink Array
- System Configuration

UJV200/UJV100 Plus Feature and Option Comparison

See also p18, 42, 44

Item	UJV200 	UJV100 plus 
Size Range	160 / 130	160
External Dimensions	160: W2,770 × D748 × H1,405 mm 130: W2,520 × D748 × H1,405 mm	160: W2,775 × D700 × H1,475 mm
Compatible Ink	ELS-170/ELS-175/LUS-210	LUS-170/LUS-210
Printhead Configuration	Single	2-piece staggered array
Cleaning Cartridge	Not Supported	Equipped
NCU <small>Nozzle Check Unit</small>	Optional installation available	Equipped
NRS <small>Nozzle Recovery System</small>	Equipped	Equipped
UISS <small>Uninterrupted Ink Supply System</small>	Not Supported	Equipped (4C only)
Auto Adjustment Function	DAS2	DAS
Roll Outer Diameter	φ180mm or less	φ250mm or less
Roll weight	Maximum 55lbs or less When using the Level foot OPT, up to 99lbs	Maximum 55lbs or less
Media Heater	PRE Heater	None

3. Other Specifications / Optional Items

	Item Name	Part Number	Remarks
1	USB2.0 CABLE (5m)	OPT-J0137	
2	LAN CABLE C6 (10m)	OPT-J0391	
3	Level foot OPT	OPT-J0502	With the OPT-J0502 Level Foot attached, supports media up to 99lbs
4	NCU OPTION	OPT-J0422	
5	IONIZER OPTION 160	A105960/OPT-J0457	
6	IONIZER OPTION 130	A106043/OPT-J0463	
7	UJV200 Ionizer OPT Connection Kit	A107835/OPT-01038	

3. Other Specifications / Supply

	Item Name	Part Number
1	BEMCOT M-3	A101437/ -
2	Cotton swab 6 inch wooden shaft S2	A107615/ -
3	MEDIA CUTTER BLADE	A101078/SPA-0107
4	Cleaning Stick for Head Surrounding	A102216/SPC-0527
5	KIMWIPE S-200	A104634/SPA-0207
6	SQUARE WASTE INK TANK 2L	A104849/SPA-0246
7	3 INCHES PAPER TUBE 160	A105785/SPC-0826
8	3 INCHES PAPER TUBE 130	A105784/SPC-0825
9	Absorber Assy	A107576/SPC-0939
10	Cap G Assy	A107478/SPA-0362
11	PR10	A104850/SPA-0247
12	Maintenance Liquid 7 kit	ML007-Z-K1
13	Cloth Wiper G Kit	SPC-0919

	Item Name	Part Number
14	FILTER SET FOR BOTTLE WIPING	SPC-0820
15	Cap Bv2 Assy	A106745/SPA-0319
16	LED Glass Assy	A107715/SP-01018

3. Other Specifications: Size, Packaging Type, Installation Environment

	UJV200-160	UJV200-130
External Dimensions (WxDxH)	2,770mm × 748mm × 1,405mm	2,520 mm × 748 mm × 1,405 mm
Installation Space (WxDxH)	3,770 mm × 2,748 mm × 1,405 mm or more	3,520 mm × 2,748 mm × 1,405 mm or more
Weight	160 kg	155 kg
Packaging Dimensions (WxDxH)	2,910 mm × 750 mm × 830 mm	2,660mm × 750mm × 830mm
Packaged Weight	197 kg	186 kg

Precautions

- Do not install in locations with dust or fine particles.
If dust or fine particles enter the unit, it may cause malfunctions or poor discharge (such as nozzle clogging or flight deviation).
- Do not install in locations exposed to air conditioning or other air currents. Dust or fine particles may enter the interior of the unit.
- Do not install in unstable locations or areas subject to vibration. This may cause malfunction or poor discharge (nozzle clogging, flight deviation, etc.).
- Do not install in locations exposed to direct sunlight.
- Do not install in locations subject to extreme temperature fluctuations. This may cause discharge problems (nozzle clogging, flight deviation, etc.).
- Do not install in locations where large, noisy machinery is present.

3. Other Specifications Product Specifications

Specifications		UJV200-160	UJV200-130
Print Head		On-Demand Piezo Head 1	
Print Resolution		Y: 600, 900, 1,200 dpi X: 600, 1,200 dpi	
Head Gap		Manual 2-step (1.5, 2.0 mm)	
Media	Supported Media Width	Minimum 210 mm Maximum 1,620 mm	Minimum 210 mm Maximum 1,370 mm
	Maximum Drawing Width	1,610mm	1,360mm
	Media Outer Diameter	φ180mm or less	
	Media Weight	Maximum 25kg or less *When using the Levelfoot OPT, up to 45kg	
	Core Inner Diameter	2 inches, 3 inches	
Interface		USB 2.0 / Ethernet 1000BASE-T	
Power Specifications		Single-phase (AC100-120V±10%/11A), Single-phase (AC200-240V±10%/5.5A), 50/60±1Hz	
Power Consumption		Maximum 1320W / Standard 550W / Minimum 4.5W or less	
Operating Environment	Operating temperature	20-30°C	
	Humidity	35-65% RH (no condensation)	
	Temperature range for guaranteed accuracy	20-25°C	
	Dust	0.15 mg/m ³ (office equivalent)	
External Dimensions (WxDxH)		2,770mm × 748mm × 1,405mm	2,520 mm × 748 mm × 1,405 mm
Unit Weight		160 kg	155 kg

System Configuration

<Computer>



<Printer Unit>



Recommended Ethernet Cable

*While USB 2.0 (recommended 5m) is also usable, an Ethernet cable is recommended for smooth printing



<Design Software>



※Supports PS, EPS, TIFF, BMP, JPEG, PDF, etc.

Recommended

OS	Windows® 11 Pro 64-bit
CPU	Intel® Core™ i5-4670K (3.4GHz)
Chipset	Intel® Z87 Express
Memory	8GB
Hard Disk	1TB or more free space (NTFS format)
Interface	Ethernet port, USB 1.1/2.0

Software supporting your workflow from design creation to output (included as standard)

< Genuine RIP Software >
Supporting print quality and operability



< Design Software - No DTP Software Required >
Simplify design creation



FAQ

Question	Answer
Can you perform multi-layer printing with 4 or more layers?	We do not support this specification, so you will need to manually pull it back.
Is the cloth wiper the same as the 330 series?	Yes, it is the same.
What is the difference between DAS and DAS2?	DAS uses a light sensor to read only K (black), while DAS2 uses a 3-light source (RGB) sensor to read and adjust all colors.
Regarding pull-back printing, what is the difference compared to the UJV100plus?	The UJV100plus required pull-back for 3-layer printing and some 2-layer printing. The UJV200 does not require pull-back for multi-layer printing except when using clear gloss.
What is the specification in mm for pull-back printing (i.e., when using clear gloss)?	1,000 mm.



Disclaimer

- Regardless of whether the UJV200-130/160 (hereinafter referred to as "this machine") malfunctions, our company shall not be liable for any direct or indirect damages arising from the use of this machine.
- The Company shall not be liable for any direct or indirect damages arising from products created using this machine.
- Using devices other than those recommended by our company may cause fire or damage to the machine. In such cases, the warranty will not apply. Furthermore, we shall not be liable for any direct or indirect damages arising therefrom.
- Use only genuine company ink and maintenance fluid. Using other products may cause print quality deterioration or machine malfunction. In such cases, the warranty will be void. Furthermore, the company shall not be liable for any direct or indirect damages arising therefrom.
- Do not refill ink bottles. This will void the warranty. Furthermore, we shall not be liable for any direct or indirect damages resulting from this.
- Never use UV-LED units or UV power supplies other than our genuine products. Using non-genuine products may cause machine malfunction, electric shock, or fire. In such cases, the warranty will be void. Furthermore, we shall not be liable for any direct or indirect damages resulting therefrom.